



## The Housing Crisis

Addressing a regional need with a regional approach

*February 2023*



## Numbers at a Glance

If it is your first time visiting the site, be sure to read [Working with the Data](#)

Last Updated: January 31, 2023

Cases Filed Since January 1, 2022: 21,133

Cases Filed in January, 2023: 2,324

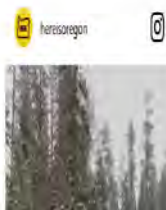
## Inflation is outpacing Oregon wages: Here's how major industries measure up

Published Apr 13, 2022, 8:19 am



By Mike Rogaway | [The Oregonian/OregonLive](#)

This is Oregon Insight, The Oregonian's weekly look at the numbers behind the state's economy. [View past installments here.](#)



WILLAMETTE WEEK

[NEWS](#) • [FOOD](#) • [DRINK](#) • [MUSIC](#) • [ARTS](#) • [GET BUSY](#) • [PODCAST](#) • [SUPPORT US](#)

## A 100 Percent Rent Hike at a Northeast Portland Apartment Building Could Force 26 Rigler Elementary School Students to Move

That's more than 5 percent of the school's student body.

Expand

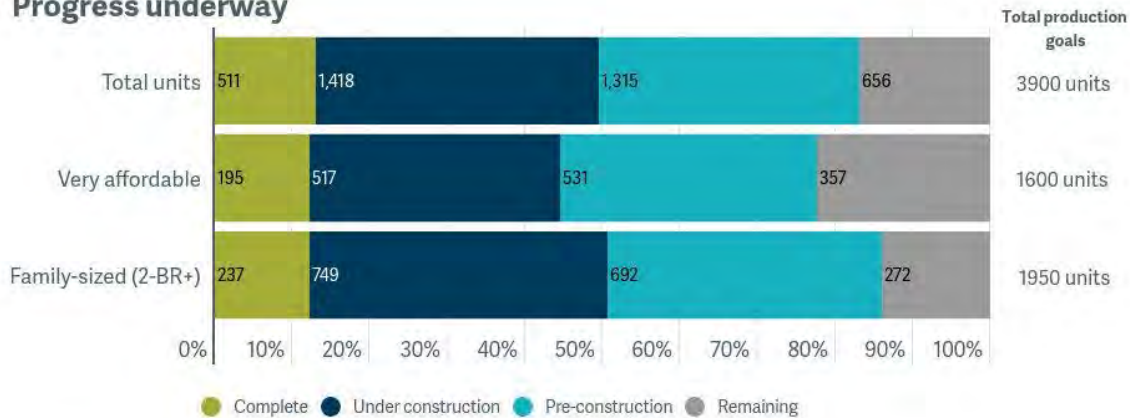




2018 Metro Affordable Housing Bond (units)	2020 Metro Supportive Housing Services (services)
Goal: 3,900 new affordable total units (including	Goal: 5000 households (extended period of time homeless, at least one disability and little to no income)
Goal: 1,600 very affordable units (30% AMI or below)	Goal: 10,000 households experiencing new or intermittent homelessness or extreme housing instability
Goal: 1,950 family sized units	Functional zero in chronic homelessness
Budget: \$650M	Budget: Approximately \$2.5 billion over 10 years

# Current production pipeline

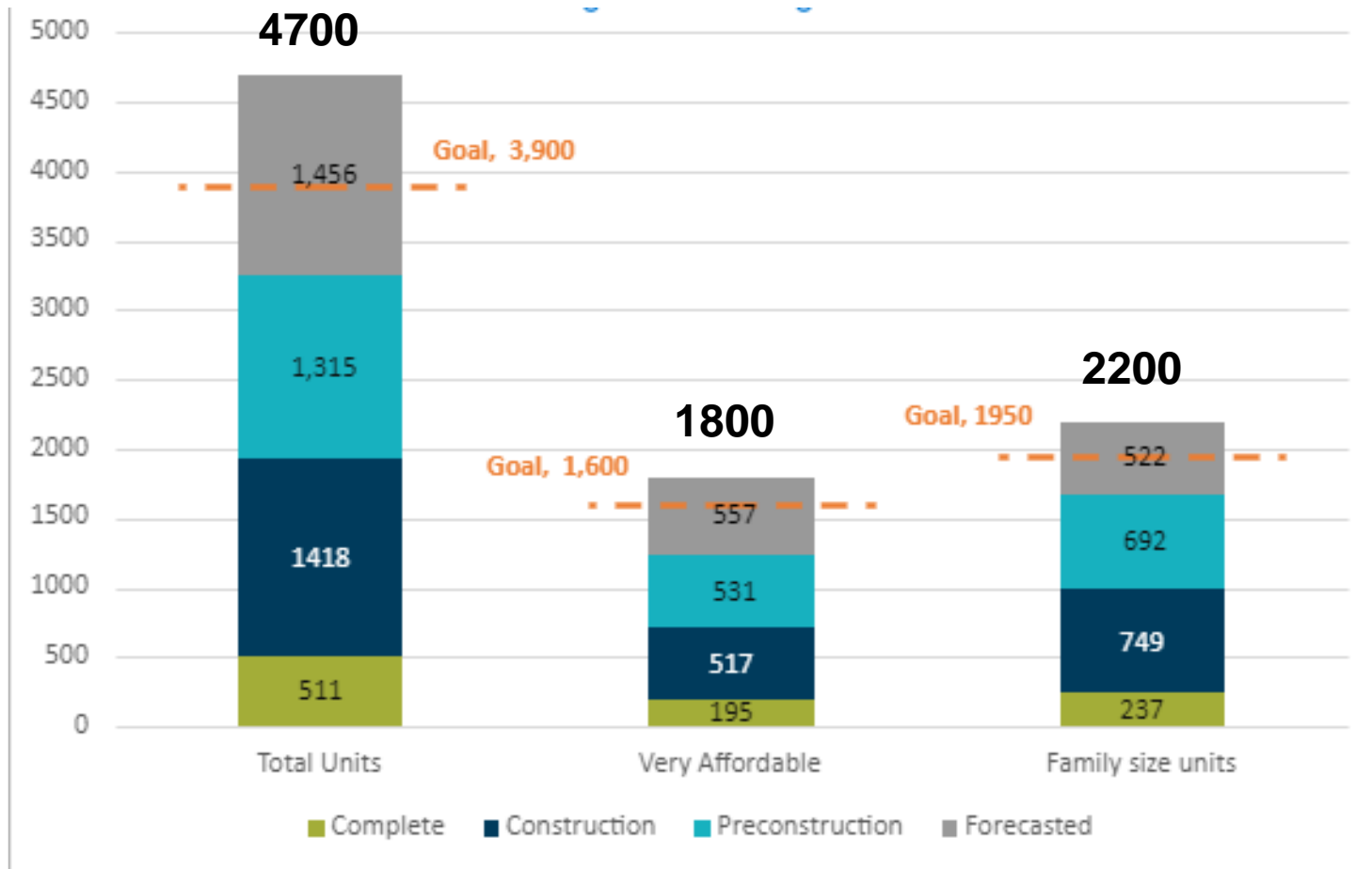
## Progress underway



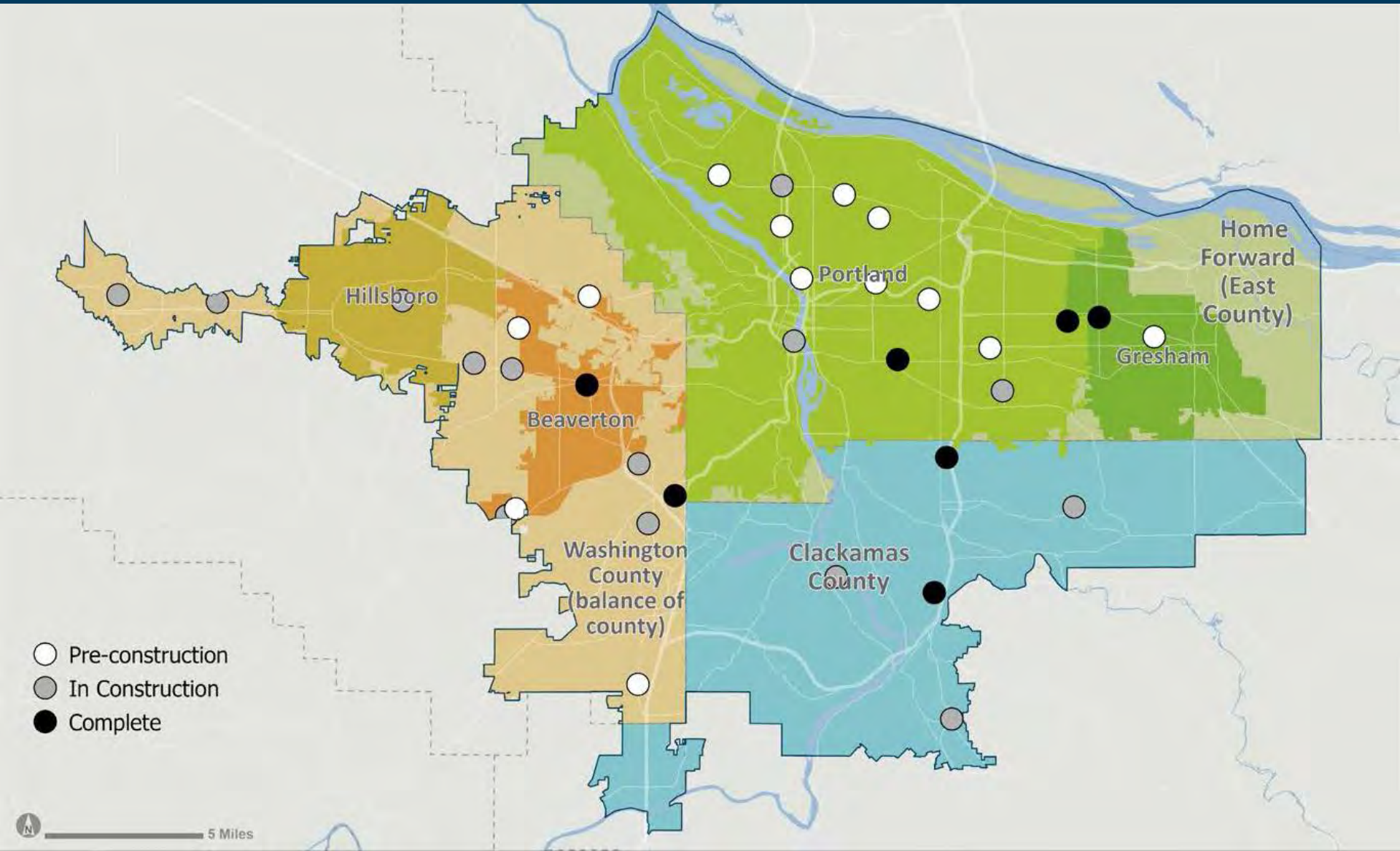
## Resources committed



# Forecasted production outcomes



# Geographic distribution

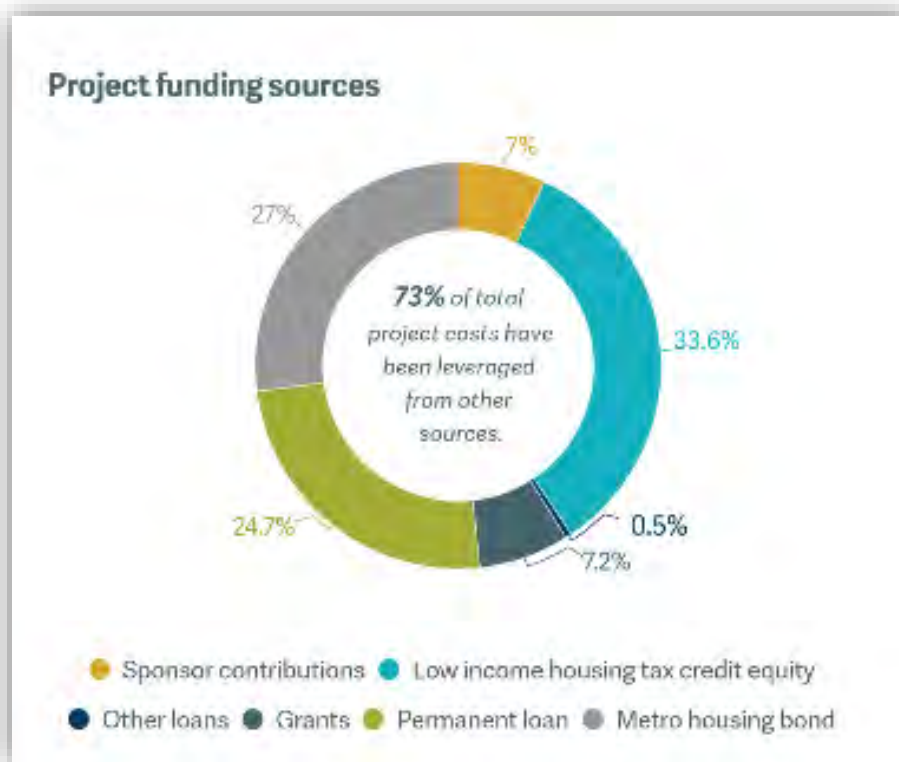


# Housing bond economic impact

\$3 billion in total construction activity

73% of funding leveraged from other sources

Goal that at least 20% of contract dollars go to COBID-certified MWESB firms



# Supportive Housing Services



**Transition and placement**  
**Benefits navigation**  
**and attainment**  
**Financial literacy**



**Employment,**  
**job training and**  
**retention education**  
**Workplace supports**



**Street outreach**  
**Peer support services**  
**Fair housing advocacy**  
**Landlord/tenant education**  
**& legal services**



**Intervention &**  
**addiction services**  
**Supports for people**  
**with disabilities**



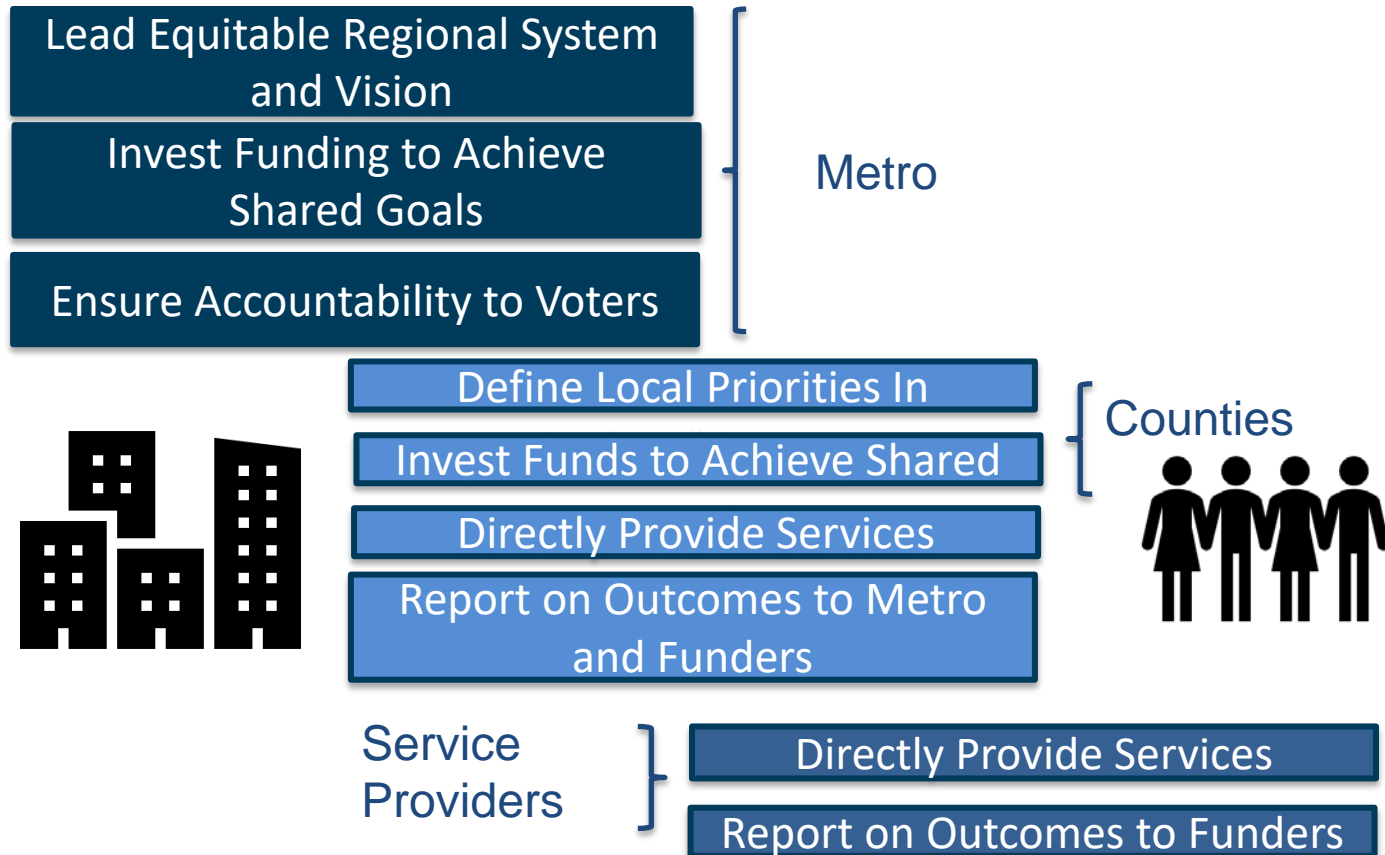
**Eviction prevention**  
**Short & PSH and long-**  
**term**  
**rent assistance**



**Shelter services**  
**Transitional housing**



# Supportive Housing Services: A new regional person-centered system



# Leadership and partnership



## Political leadership

- Define & communicate success
- Advocate for state, federal & private investment
- Demonstrate accountability



## Programmatic efforts

- Create systems & strategies through partnership
- Support & structures for services & outcomes



## Together

- Compassionate, people-centered approach
- Keeping promises and building back better

# Progress in ending people's homelessness

Totals (all counties as of Sept 30)



**2,203**

people placed in  
housing



**9,386**

eviction  
preventions



**991**

shelter beds created  
or sustained



# Building a Regional System

- **Regional procurement** -- Support the scaling up of community-based organizations to **expand network of services**
- Build regional network of **culturally specific providers**, including small/emerging organizations
- Develop **regional data governance**, collection standards and visualization tools
- **Regional long-term rent assistance** program, including coordinated landlord recruitment





# SHS Challenges and Opportunities

Launching from a deficit:



- COVID-19 Pandemic
- Time
- Housing supply
- Capacity in intersecting systems

# AHB Challenges and opportunities

Working with state and local partners to address financial challenges:



- Private activity bond cap
- Cost escalation and rising interest rates
- Climate change

# Looking ahead

- Increased local innovation
- Alignment with the health sector
- Focus on capacity-building: provider recruitment and retention
- Greater regional access to privately-owned units for SHS placements
- More direct communication with the general public
- Stronger partnership with the State of Oregon



# More information

<https://www.oregonmetro.gov/public-projects/supportive-housing-services/progress>

<https://www.oregonmetro.gov/public-projects/affordable-homes-greater-portland/progress>