



Metro

GPI Best Practices 2023

Metro Parks and Nature

Parks and Nature Mission and Vision

Metro Parks and Nature protects water quality, fish and wildlife habitat, and creates opportunities to enjoy nature close to home through a connected system of parks, trails and natural areas.

We envision a better future for greater Portland with healthy lands and healthy people. People from all backgrounds will benefit equitably from the values of nature and cultural heritage through a world-class regional park system.

Three decades protecting what makes this place special

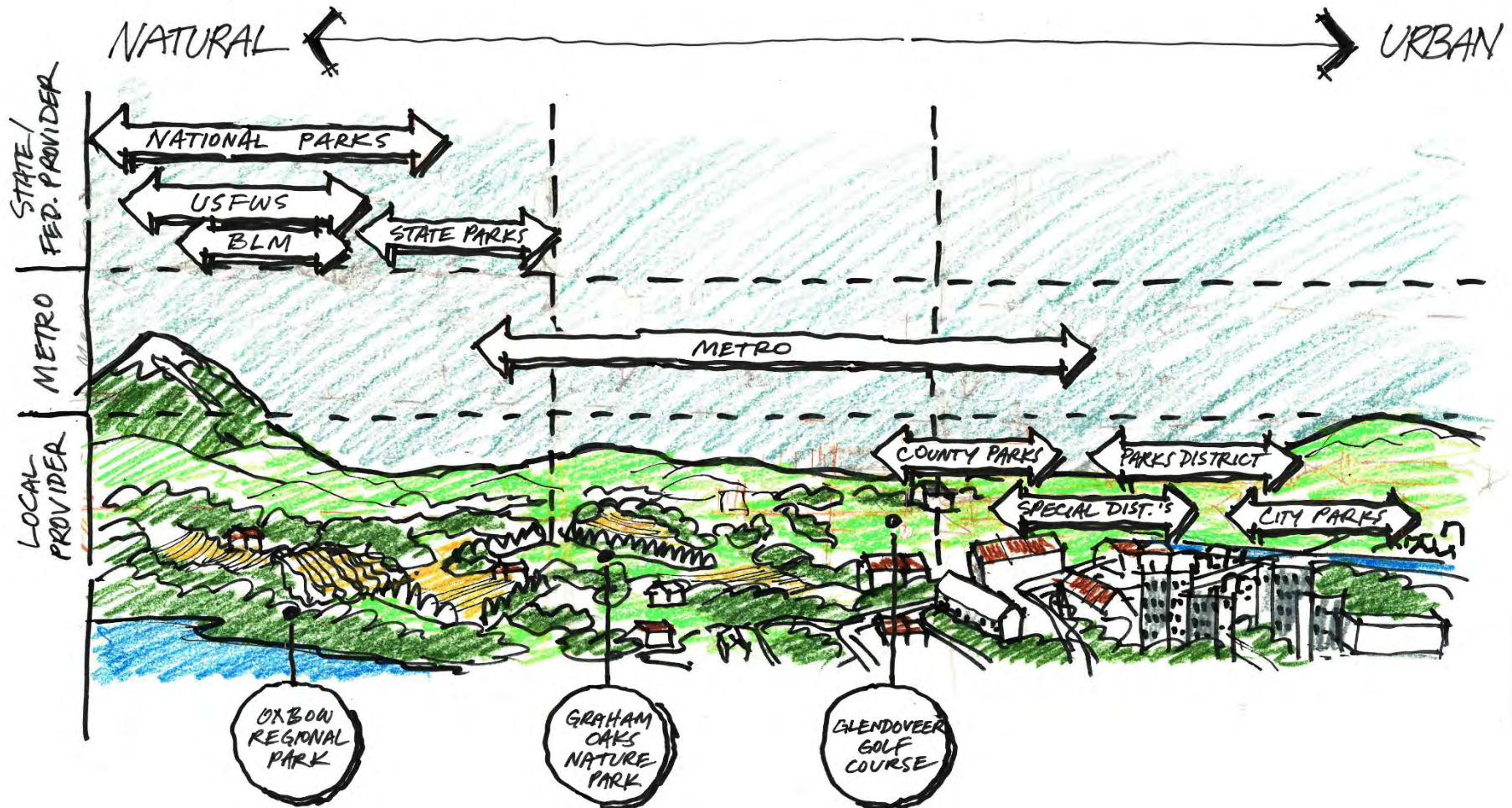
- **Natural area land acquisition and restoration**
 - 15,000+ acres of priority habitat and ongoing restoration (Clackamas river, Chehalem Ridge, Quamash prairie)
 - 100 miles of stream corridors
 - Filling key gaps in the regional trail network (40-mile loop)
- **Local community investments**
 - Local share and Nature in Neighborhoods grant dollars for projects like Nadaka Nature park, Cully Park, Milwaukie riverfront park, Orenco Woods nature park
- **Metro capital projects and park operations**
 - Nature parks—Chehalem Ridge, Newell Creek, Cooper Mountain, Graham Oaks, upgrades to Blue Lake Park and Oxbow



Metro Parks and Nature's role in the region



Metro

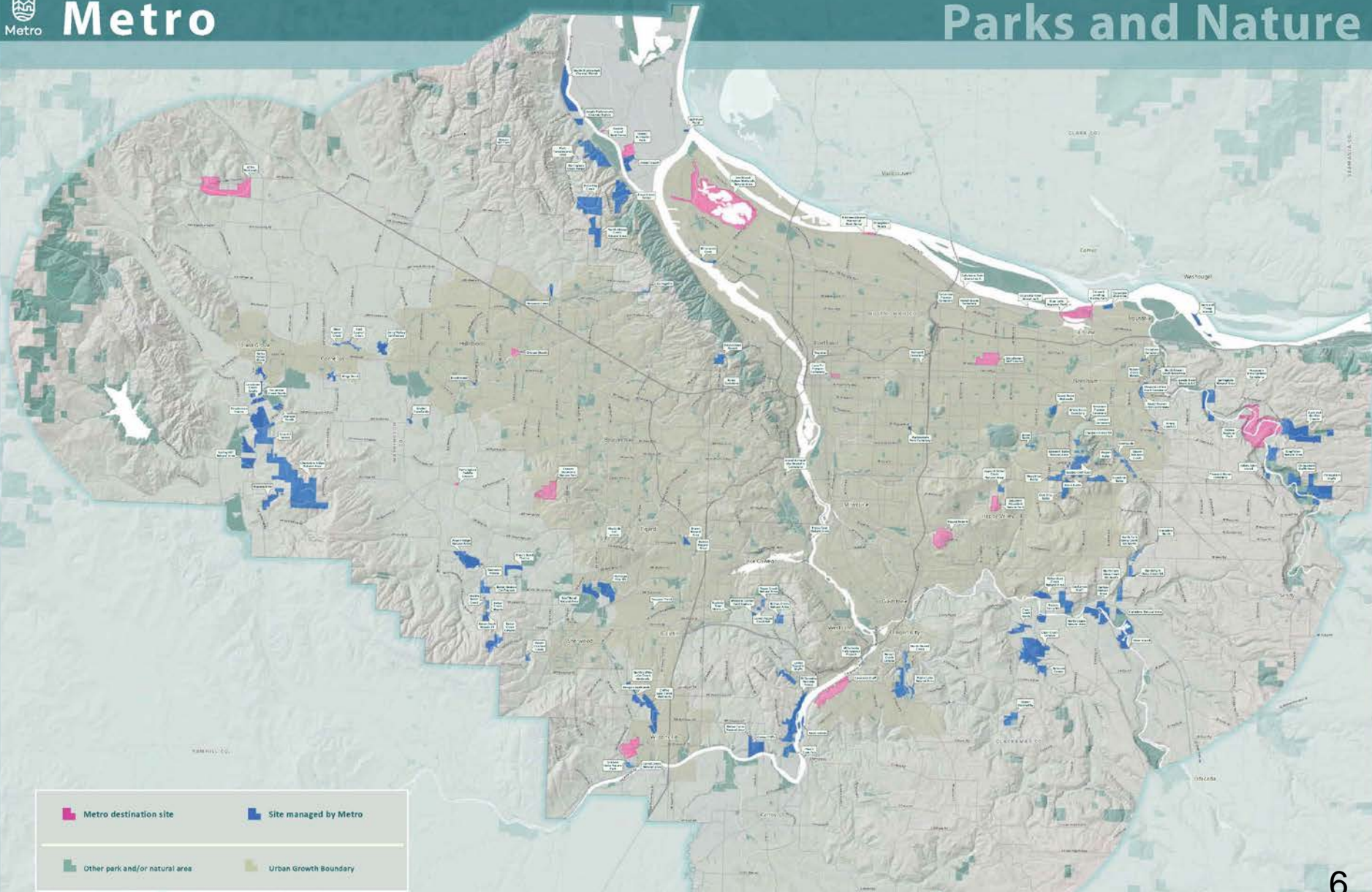


25 years protecting and restoring land



Metro

Parks and Nature



Access to nature – parks and education



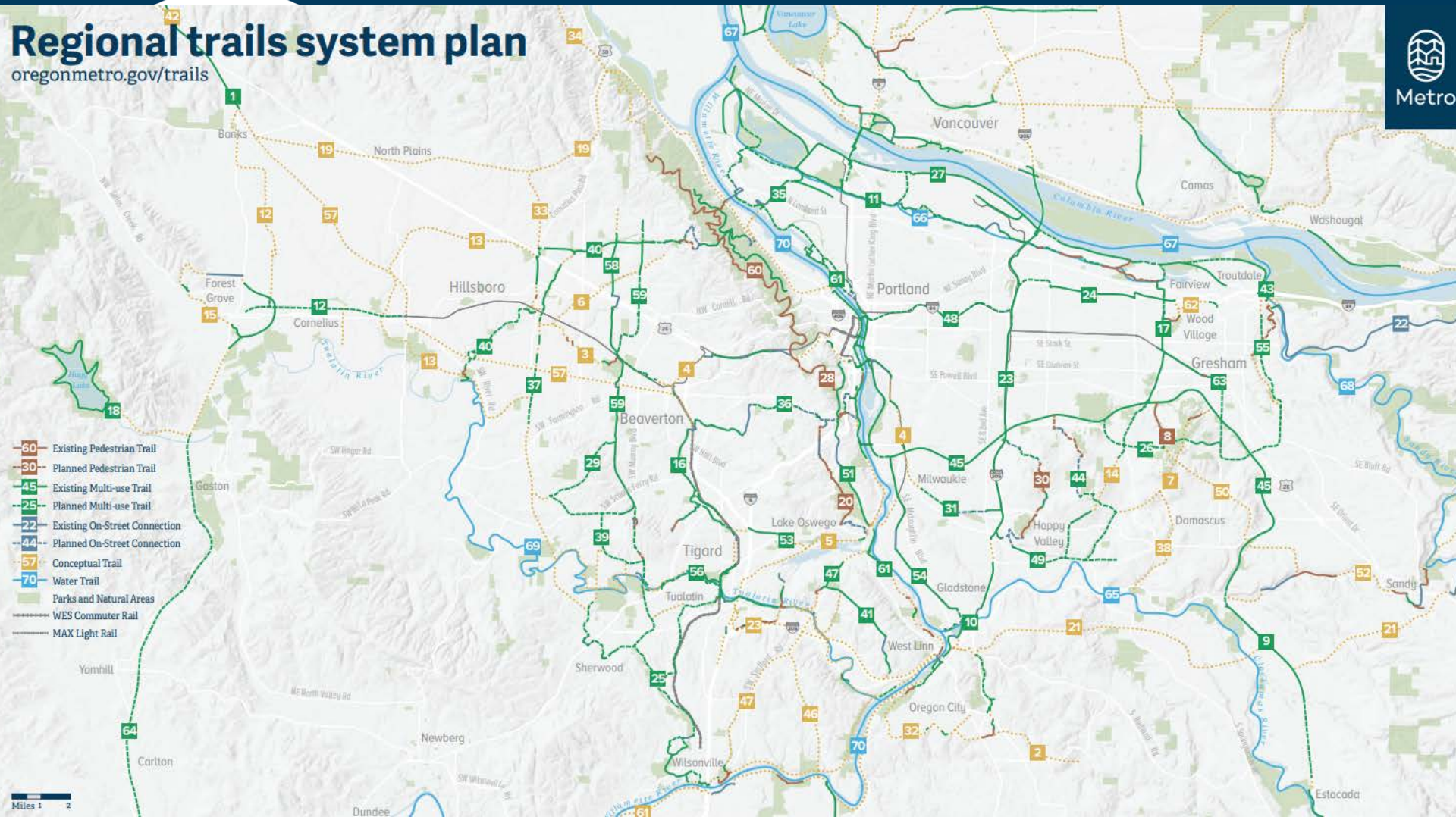
Access to nature – regional trails

Regional trails system plan

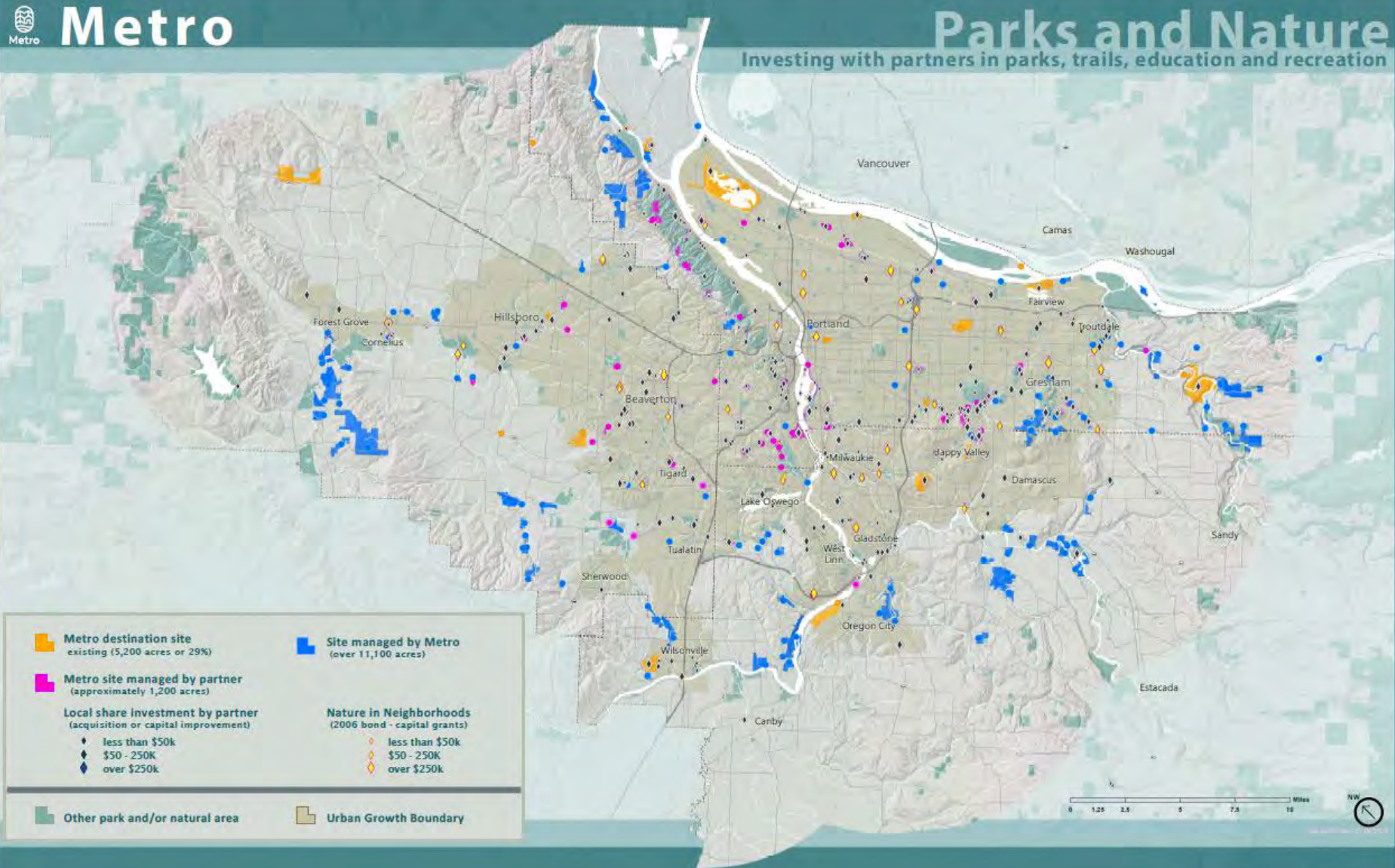
oregonmetro.gov/trails



Metro



Leveraging resources— capital bond funds



Leveraging resources- operating levy funds

